

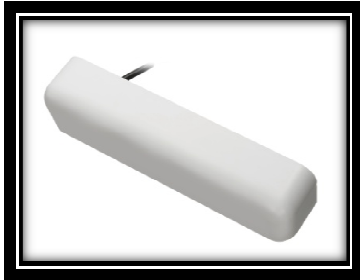
KEEP IT DRY



Operation - EECS

The Electronic Energy Control System (EECS) reins in energy consumption by operating at the minimum possible power for the amount of detected condensate.

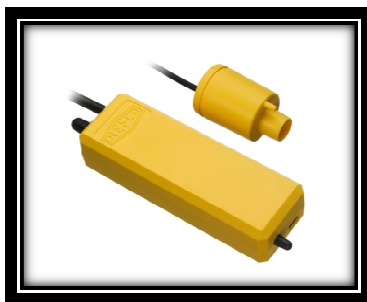
The new pumps continuously **monitor** the level of condensate and **dynamically regulate** the pump power accordingly. This means that if the condensate flow rate is low then the pump will run on minimum power but if the flow rate increases then the pump power will be adjusted to match it.



*GOBI: ≤ 21 dB

GOBI - Technical Data

Power Supply	120/240V, 50/60Hz Auto sensing
Power Consumption	16 W max., 0.25 W when idle
Alarm Relay	5 A, 30 VDC, 250 VAC Break on fault
Capacity	3.17 US gal/hour max.
Maximum Head	Vertical >65 ft, Horizontal >328 ft, Suction 3.28 ft max.
Ambient Temp:	32°F - 104°F
Water Temp	77°F max.
Material:	Flame retardant ABS UL94 5VA
Discharge Tube:	1/4" ID
Dimensions:	11.3" x 2.4" x 2"



*SAHARA: ≤ 16 dB

SAHARA - Technical Data

Power Supply	120/240V, 50/60Hz Auto sensing
Power Consumption	16 W max., 0.25 W when idle
Alarm Relay	5 A, 30 VDC, 250 VAC Break on fault
Capacity	3.17 US gal /hour max.
Maximum Head	Vertical >65 ft, Horizontal >328 ft, Suction 3.28 ft. max.
Ambient Temp	32°F - 104°F
Water Temp	77°F max.
Material	Flame retardant ABS UL94 5VA
Discharge Tube	1/4" ID
Dimensions Pump	5.3" x 1.8" x 1.26"
Dimensions Sensor	45 x 36 mm dia.



*YUMA: ≤ 18 dB

YUMA - Technical Data

Power Supply	120/240V, 50/60Hz Auto sensing
Power Consumption	16 W max., 0.25 W when idle
Alarm Relay	5 A, 30 VDC, 250 VAC Break on fault
Capacity	3.17 US gal /hour max.
Maximum Head	Vertical >65 ft, Horizontal >328 ft, Suction 3.28 ft. max
Ambient Temp	32°F - 104°F
Water Temp	77°F max.
Material	Flame retardant ABS UL94 5VA
Discharge Tube	1/4" ID
Dimensions:	6.9" x 1.8" x 1.6"



*KAROO: ≤ 12 dB

KAROO - Technical Data

Power Supply	120/240V, 50/60Hz Auto sensing
Power Consumption	16 W max., 0.25 W when idle
Alarm Relay	5 A, 30 VDC, 250 VAC Break on fault
Capacity	3.17 US gal /hour max.
Maximum Head	Vertical >65 ft, Horizontal >328 ft, Suction 3.28 ft. max
Ambient Temp	32°F - 104°F
Water Temp	77°F max.
Material	Flame retardant ABS UL94 5VA
Discharge Tube	1/4" ID
Dimensions:	6.3" x 1.7" x 1.3"

*** Noise level certified by an independent SWISS Materials Science and Technology Institute according to EN ISO 3744:2010 and EN ISO 4871, Appendix A: 2009 standard.**